

# Furukawa Art Museum and Tamesaburo Memorial Museum

The Furukawa Art Museum was established to showcase the treasured art collection of Tamesaburo Furukawa, a prominent entrepreneur and philanthropist from Nagoya. The museum houses over 2,800 works, including Japanese paintings and pieces by local artists. The annex, Tamesaburo Memorial Museum, is a traditional Japanese residence that once served as Furukawa's home. Designed as a space for enjoying tea ceremonies, this historic building—registered as a National Tangible Cultural Property—offers visitors the chance to savor tea while admiring its exquisite Japanese architecture and serene garden views.

## Tamesaburo Memorial Museum



The former residence of Nagoya's leading tycoon, Tamesaburo Furukawa, featured in a famous American economic magazine.

### Events

(季節ごとのイベントのご案内文章が入ります)

### Follow our Social Media

Follow the Furukawa Art Museum on Instagram and Facebook.

Follow Us!

facebook



Instagram



## Rooms in the Tamesaburo Memorial Museum

### Oogiri no Ma



The view from Oogiri no Ma through checkerboard lattice windows is unforgettable. The paulownia-patterned sliding doors, paired with a carved transom reflecting layered mountains and cloud-like shoji frames, create a profound ambiance.



### Hisago no Ma



The Hisago no Ma is the most elegant room in the main building. The room's name comes from the gourd patterns, embossed in lacquer, on the fusuma sliding doors and the fittings are reminiscent of the Katsura Imperial Villa.



### Taro-an



Taro-an was designed in the style of tea master Taroan Takata. The fusuma sliding doors show the Taroan camellia by artist Maki Yamamoto. In winter, the camellias outside, visible through shoji, complement the atmosphere.



### Aoi no Ma



A tea room with an open design, minimizing walls to let in ample natural light and scenery. Guests can enjoy a sweeping view of the garden through the windows while reflecting on the spirit of hospitality.



### Sakura no Ma



One highlight of the Sakura no Ma is the mural, which acts as a prologue to the ceiling painting, titled *Seasonal Storm* by Aichi-based Western-style painter Noriko Tamura. The cherry blossoms, fluttering down from the sky, seem to cascade down the wall, as if they are falling toward us, the viewers.

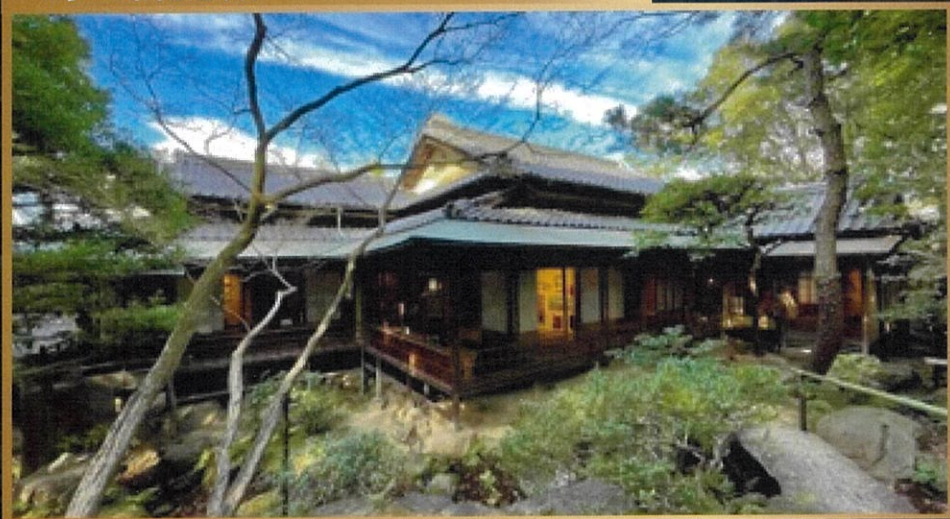




## 古川美術館 與 為三郎紀念館

古川美術館是為了展示名古屋著名企業家和慈善家古川為三郎的珍貴藝術收藏品而建立的。博物館收藏了超過2,800件藝術品，包括日本畫作和當地藝術家的作品。附屬建築「為三郎紀念館」是一座傳統的和式建築，曾經是古川先生的住所。這座歷史悠久的建築被設計為一個享受茶道的空間，現已被列為國家有形文化財產，為遊客提供品嚐抹茶的機會，同時欣賞其精美的建築風格和寧靜的庭園景觀。

### 為三郎紀念館



名古屋大亨古川為三郎的故居，曾被美國著名經濟雜誌刊登報導。

#### 活動

(季節ごとのイベントのご案内文章が入ります)

#### 官方社群帳號

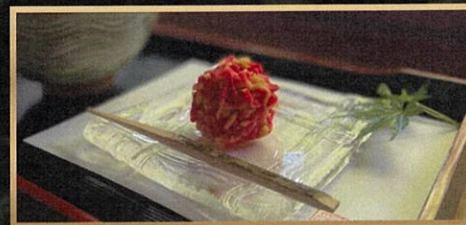
在Instagram和Facebook上關注【古川美術館】。

Follow Us!

facebook



Instagram



### 為三郎紀念館內的房間

#### 大桐之間



透過格子窗看到的大桐之間內飾令人難忘。桐木紋的拉門，搭配障子門上的雕花氣窗，如層巒疊嶂的山巒和雲朵的相互映襯，營造出一種深遠的氛圍。



#### 瓢之間



瓢之間是主樓中最雅致的房間。房間的名稱來自隔扇滑門上漆葫蘆圖案的浮雕，其裝飾設計讓人聯想到桂離宮。



#### 太郎庵



太郎庵是根據茶道大師高田太郎庵的風格設計的。隔扇滑門上展示的是藝術家山本真希創作的太郎庵山茶花。每到冬季，格子窗外的山茶花與太郎庵內的氛圍相得益彰。



#### 葵之間



茶室採用開放式設計，盡量減少牆壁，以便讓充足的自然光線和風景進入室內。客人可以透過窗戶欣賞庭園的秀麗景色，感受這裡熱情好客的氛圍。



#### 櫻花之間



櫻之間的亮點之一是天花板畫作「季節之風暴雨」的序幕壁畫，作者是愛知縣的西洋畫家田村能里子。當我們欣賞畫作時，從空中飄落的櫻花似乎沿著牆壁飛舞到我們身上。

